

[www.wbfdc.com](http://www.wbfdc.com)



# NATURAL LANDSCAPE DESTINATIONS

Eco-resorts – A date with wilderness

**West Bengal Forest Development Corporation Ltd.**

(An Undertaking of Forest Department, Government of West Bengal)

For online booking: [www.wbfdc.net](http://www.wbfdc.net)



“Look deep into nature, and then you  
will understand everything better.”

Albert Einstein

# NATURAL LANDSCAPE DESTINATIONS

Eco-resorts of West Bengal

West Bengal is endowed with a rich biodiversity and natural heritage. 13.36% of its geographical area is under forest cover with 16 Wildlife Sanctuaries, 6 National Parks, 2 Tiger Reserves, 1 Biosphere Reserve. The natural canvas of the entire region is very fascinating.

To provide scope for the citizens to appreciate the wilderness and wildlife amidst natural surroundings, West Bengal Forest Development Corporation Limited promotes several 'Wilderness Destinations' of the state - each with its unique habitat, landscape and wildlife, with modest 'Nature Resorts' dotting this fascinating canvas.

**Let's plan an encounter with Nature!!!**

- **BUXA**

The historical forests of West Bengal

Nature Resorts: **Rajabhatkhawa** | **Rasikbil**

- **JALDAPARA**

The grasslands of Rhino habitat

Nature Resort: **Malangi** | **Mendabari** | **Hollong**

- **GORUMARA**

The National Park

Nature Resorts: **Lataguri** | **Murti and many more**

- **NEORA VALLEY**

The mystic jungles of Darjeeling

Nature Resorts: **Samsing** | **Suntalekhola** | **Mouchaki**

- **DARJEELING**

An abode in the clouds

Nature Resorts: **Lepchajagat** | **Takdah** | **Chatakpur**

- **MAHANANDA**

The Elephant corridor of northern Doors

Nature Resort: **Mongpong**

- **KALIMPONG**

An explorer's paradise

Nature Resorts: **Kalimpong** | **Lava** | **Lolegaon**

- **JALDHAKA**

A stay on the waters of Jhalong

Nature Resorts: **Jaldhaka** | **Paren** | **Jhalong**

- **GARPANCHKOT**

Historical treasures of Purulia

Nature Resort: **Garpanchkot**

- **MUKUTMANIPUR**

A stay on the lake-side

Nature Resort: **Mukutmanipur**

- **JHARGRAM**

The heart of Jungalmahal

Nature Resorts: **Jhargram** | **Hatibari** | **Lodhasuli**

- **TAJPUR**

The golden beaches

Nature Resort: **Tajpur**

- **HIDDEN GEMS OF NATURE**

Nature Resorts: **Gorubathan** | **Garchumuk** | **Bolpur**



# BUXA

## The historical forests of West Bengal

Nestled in the north-eastern corner of West Bengal, bordering Bhutan and Assam, is the Buxa Tiger Reserve - the historical forests of the state. These dense forests are endowed with great bio-diversity where the major fauna being Bengal Tigers, Leopards, Asian Elephants, Bisons, Bears and endless variety of flora spread over the foothills of the Himalayas. Several treks lead to the Buxa Fort and Jayanti Mahakal Caves. The forest is a canvas of dense canopy inter-spread with grasslands, mountain ranges and rivers. The Wildlife Interpretation Centre nearby is also very educative.

**PLACES TO STAY** - Rajabhatkhawa | Rasikbil



Rajabhatkhawa Nature Resort



Rasikbil Nature Resort

### ACTIVITIES



Trekking



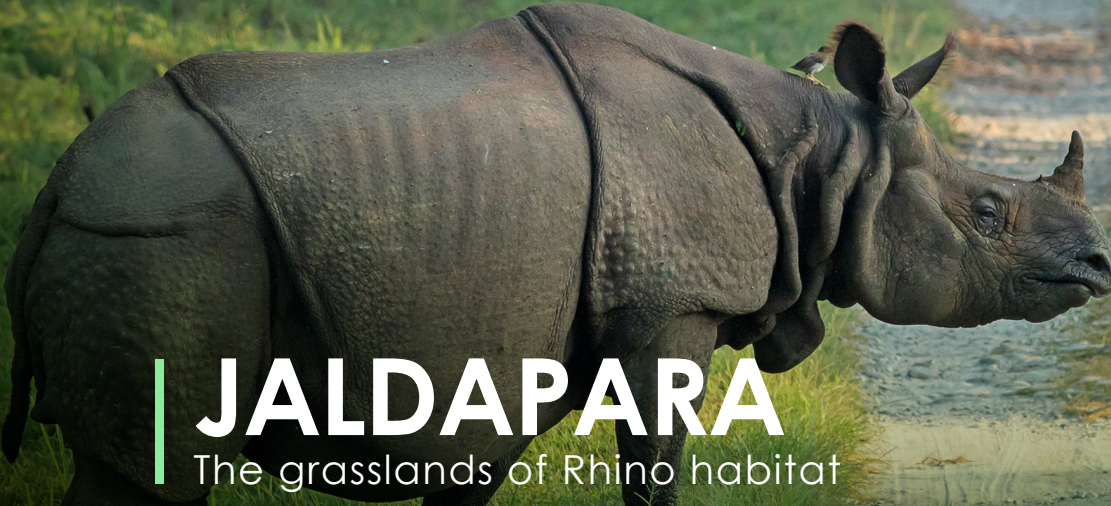
Wildlife Sighting



Bird Watching



Tea-garden Visit



# JALDAPARA

The grasslands of Rhino habitat

At the foothills of the eastern Himalayas, on the Banks of river Torsa, is Jaldapara that spreads over vast grasslands with patches of thick forests on the banks of river systems. It is the second largest and the densest habitat of the Indian Rhino after Kajiranga. The other major fauna includes Bengal Tigers, Leopards, Asian Elephants, Bisons, Bears and a great variety of deer population.



Malangi Nature Resort



Inside View

**PLACES TO STAY - Malangi | Mendabari | Hollong**

## ACTIVITIES



Wildlife Sighting



Bird Watching



Jeep Safari



Elephant Safari



Tea-garden Visit



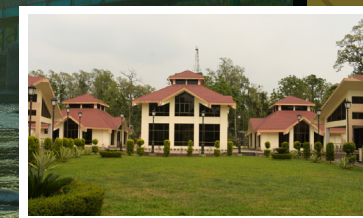
Temple Visit



# GORUMARA

## The National Park

Located in the Dooars of the Himalayas foothills, the Gorumara National Park is a lovely landscape of dense forests and grasslands. Covering the flat plains of Murti and Raidak river systems, it is the address to the Indian Rhino population besides a great variety of wildlife. The Chapramari Sanctuary nearby, the historical Lataguri Forests, the Mal Bazar nearby and the Tilabadi Interpretation Centre add to the attractions of the place.



Lataguri Nature Resort



Murti Nature Resort

**PLACES TO STAY** - Lataguri | Murti | Panjhore | Hornbill | Kalipur | Dhupjhora | Rhino Camp | Neora Jungle Camp

### ACTIVITIES



Wildlife Sighting



Bird Watching



Jeep Safari



Elephant Safari



Tea-garden Visit



Temple Visit



Wilderness Camping



# NEORA VALLEY

The mystic jungles of Darjeeling

One of the virgin patches of forests in India almost inaccessible to the people, the Neora Valley National Park is situated on the higher reaches of Kalimpong district. At the base of the Park almost on the fringes of forest, approachable from Mal Bazar and on the banks of the river Suntalekhola, is the base camps of Samsing and Suntalekhola. An ideal place for a great stay in the jungle!!! A drive through undulating tea gardens lead to the forests of the Neora Base Camp.



Samsing Nature Resort



Suntalekhola Nature Resort

**PLACES TO STAY** - Samsing | Suntalekhola | Mouchaki

## ACTIVITIES



Trekking



Bird Watching



Wilderness Camping



Tea-garden Visit



Walk along the River-beds



Campfire



Lepchajagat Nature Resort



Takdah Nature Resort

# DARJEELING

An abode in the clouds

Close to the Queen of Hills - Darjeeling Town, a stay in the clouds of Lepchajagat or a drive through the thick jungles of the Takdah at an elevation of 7000 ft, you will surely feel the chill and the remoteness of the wilderness. Home to a variety of wild orchids, the region always stay covered by thick clouds. The magical locations around are unique experiences for any visitor.

**PLACES TO STAY** - Lepchajagat | Takdah | Chatakpur

## ACTIVITIES



Trekking



Bird Watching



Temple Visit



Tea-garden Visit





# MAHANANDA

The Elephant corridor of northern Doars

Located in the foothills of the Himalayas between Teesta and Mahananda rivers, the Sanctuary forms the core corridor or the migratory route of North Bengal elephant population. It has great variety of Eco-systems starting from the Teesta River bed to dense mixed wet forest in higher elevations. The sanctuary has a variety of wildlife including wild elephant population, leopards, bears etc. The North Bengal Safari Park, the Coronation Bridge, the Tea gardens add to the beauty of the location.



Mongpong Nature Resort



outside View

## PLACE TO STAY - Mongpong

## ACTIVITIES



Wildlife Sighting



Bird Watching



Tea-garden Visit



Wilderness Camping



Temple Visit



Walk along the River-beds



Campfire



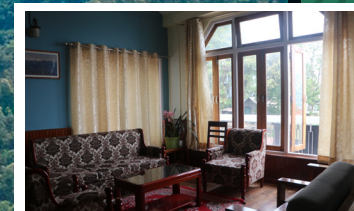
# KALIMPONG

An explorer's paradise

The district of Kalimpong still nurtures that old world charm of a hill station. On way to Gangtok from Kalimpong, one can come across several picturesque orchid and cactus farms. Pamper yourself with some great views of the snow-capped mountains and golf lawns.

Lava is a small hamlet in the upper reaches of Kalimpong. Situated at 7200 ft, it always remains shrouded in mist and clouds. The undulating Dhupi forests are the entry point to the Neora Valley National Park. Besides numerous treks to Neora, one can explore many other important locations like Changy Water Falls, Rachel's Pass and Lava Kogyn Chenling Monastery.

**PLACES TO STAY** - Kalimpong | Lava | Lolegaon



Kalimpong Nature Resort



Lava Nature Resort



Lolegaon Nature Resort

## ACTIVITIES



Trekking



Bird Watching



Tea-garden Visit



Campfire

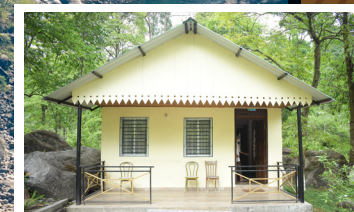


# JALDHAKA

## A stay on the waters of Jhalong

The hill-station is situated near the Indo-Bhutan border, in close proximity to Chapramari Wildlife Sanctuary. Jhalong is a paradise for nature lovers which is located on the cascading streams of Jaldhaka river. The beauty of the place lies in its remoteness and serenity. The cinchona plantations, the Chapramari Sanctuary nearby, Kumari Forests and Jaldhaka High Project add variety to the place.

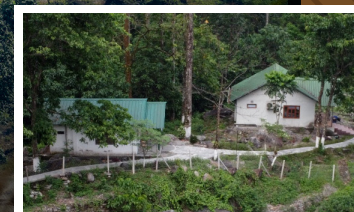
**PLACES TO STAY** - Jaldhaka | Paren | Jhalong



Jaldhaka Nature Resort



Paren Nature Resort



Jhalong Nature Resort

### ACTIVITIES



Trekking



Bird Watching



Tea-garden Visit



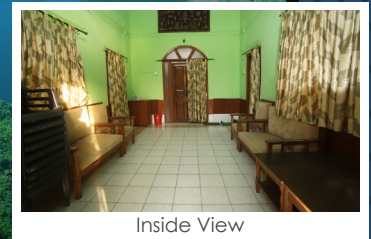
Walk along the River-beds



Campfire



Garpanchkot Nature Resort



Inside View

# GARPANCHKOT

Historical treasures of Purulia

The dense forests of Purulia, the historical flavor of the place and the rich aroma of jarring Palash flowers create the enigma of this region. The famous Joychandi Pahar and the temple of Chandimata on its top are frequently visited by tourists. Panchet Dam also adds an added attraction.

**PLACE TO STAY - Garpanchkot**

## ACTIVITIES



Trekking



Bird Watching



Temple Visit



Mukutmanipur Nature Resort



Inside View

# MUKUTMANIPUR

A stay on the lake-side

Mukutmanipur is located on the confluence of Kasai and Kangshabati rivers. The huge water-body in the midst of dense forests is an apt description of Mukutmanipur. The dense forests of Ranibandh, Modgodha, Hirbandh and the local tribal culture add beauty and variety to the location. Due to its close proximity to Kolkata, it remains a popular weekend destination. The deer park on the water body is approachable only by boat.

**PLACE TO STAY - Mukutmanipur**

## ACTIVITIES



Trekking



Bird Watching



Temple Visit



Jhargram Nature Resort



Hatibari Nature Resort

# JHARGRAM

The heart of Jangalmahal

A weekend tourist destination not very far from Kolkata, known for its dense sal forests and ancient royal places, Jhargram is the soul of Jangalmahal. Vibrant tribal communities and dense forests on the banks of important rivers Kangshabati and Subamarekha add diversity to the natural canvas. This is a natural habitat of a huge population of elephants where a chance encounter with the wildlife can never be ruled out.

**PLACES TO STAY** - Jhargram | Hatibari | Lodhasuli

## ACTIVITIES



Wildlife Sighting



Bird Watching



Temple Visit



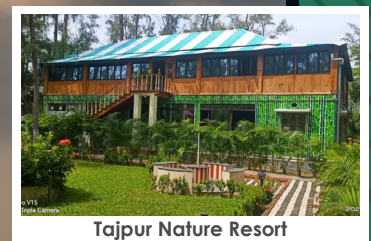
Wilderness Camping



# TAJPUR

The golden beaches

In close proximity to the golden beaches of Digha and Shankarpur, this lovely spot remains a little unknown for a 'weekend beach destination', away from Kolkata. The less crowded location has several attractions and activities, like visiting the fisherman village and long walks along the beaches. One can also try some delicious wayside sea-food.



Tajpur Nature Resort



Inside View

## PLACE TO STAY - Tajpur

## ACTIVITIES



Trekking



Bird Watching



Wilderness Camping



Temple Visit



Walk along the River-beds



Drive through the Beaches



# HIDDEN GEMS OF NATURE

Some stand-alone hidden gems of the nature, dotting the landscape of the state, are some of the lesser known eco-resorts.

**PLACES TO STAY** - Gorubathan | Garchumuk | Bolpur



Garchumuk Nature Resort



Gorubathan Nature Resort

## ACTIVITIES



Bird Watching



Walk along the River-beds





# JUNGLE SAFARI

---

The wildness and wilderness of the deep jungles of North Bengal have always attracted wild-lovers. No wonder the Elephant Safari and the Jeep Safari tours remain the 'hot pick' in most of the tourist spots across the belt. An expansive array of flora and fauna along with some rare species of birds dwell in these pristine forestlands. Ready to be spotted along the Safari journey. Come and explore the wild in their very own habitat in the lap of nature. Let the adventure begin!

**JEEP SAFARI** - Jaldapara National Park & Gorumara National Park

**ELEPHANT SAFARI** - Jaldapara National Park & Gorumara National Park



# WILDERNESS CAMPING

---

**West Bengal Forest Development Corporation Ltd.** has introduced the concept of wilderness camping. Drive-in on your own cars and camp in the secluded wilderness camping sites. All these sites are provided with security, sanitization, electricity, tented accommodation and food facilities. Camps are seasonal.

Excellent experiential programmes for trekking and camping under the stars.

**Check our website for details of destinations and offers!**

**PLACES** - Mongpong | Hatibari | Tajpur | Suntalekhola | Murti





## TOUR MANAGER

---

Are you planning a family tour or a nostalgic trip with your friends? For multiple tour destinations and extended periods of stay, Forest Corporation offers you the 'Tour Manager' facility.

Forest Corporation provides a holistic package including pick-up, transport, accommodation, food, guides and special events/programmes. Custom made to meet all your requirements, a dedicated Tour Manager for each group will facilitate you on your trip.

## CORPORATE EVENT MANAGEMENT

---

Is your company planning a conference or experiential team building activities? Forest Corporation provides custom made event/programmes to suit your needs and group.

Packages may include pick-up, transport, accommodation, event management, food and more.

**Please check the WBFDC website for details: [www.wbfdc.com](http://www.wbfdc.com)**



## Nature Club Membership

Register yourself, free of cost, to get the Corporation's 'Nature Club Membership' and get e-newsletters, SMS/WhatsApp alerts, special offers and discounts!

## Online Booking Platform

Visit us at the 'Nature Resorts Online Booking Platform' [www.wbfdc.net](http://www.wbfdc.net) for exciting new features, easy navigation, simple process of reservation and cancellation facilities, hassle-free check-in facilities, special features like Tour Manager, Corporate Event Management and 'Post Your Photo' feature!  
Explore more for some hidden surprises!



### **West Bengal Forest Development Corporation Ltd.**

An Undertaking of Forest Department, Government of West Bengal

'Aranya Bikash', KB-19, Sector-III, Salt Lake City, Kolkata - 700 106

Phone (Office): **2335-0064** | Website: [www.wbfdc.com](http://www.wbfdc.com)

Email: [bookings@wbfdc.com](mailto:bookings@wbfdc.com) | Booking Site URL: [www.wbfdc.net](http://www.wbfdc.net)